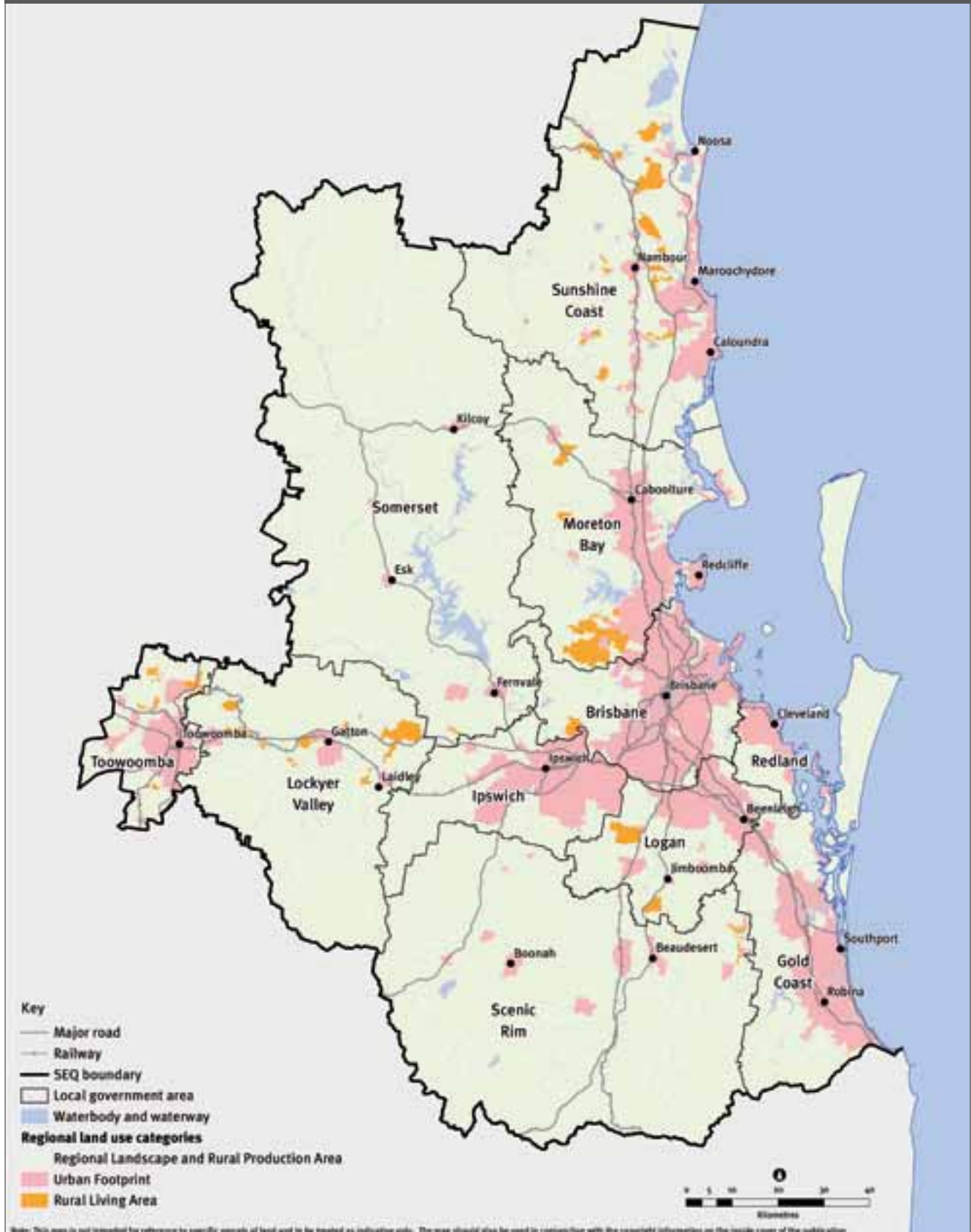


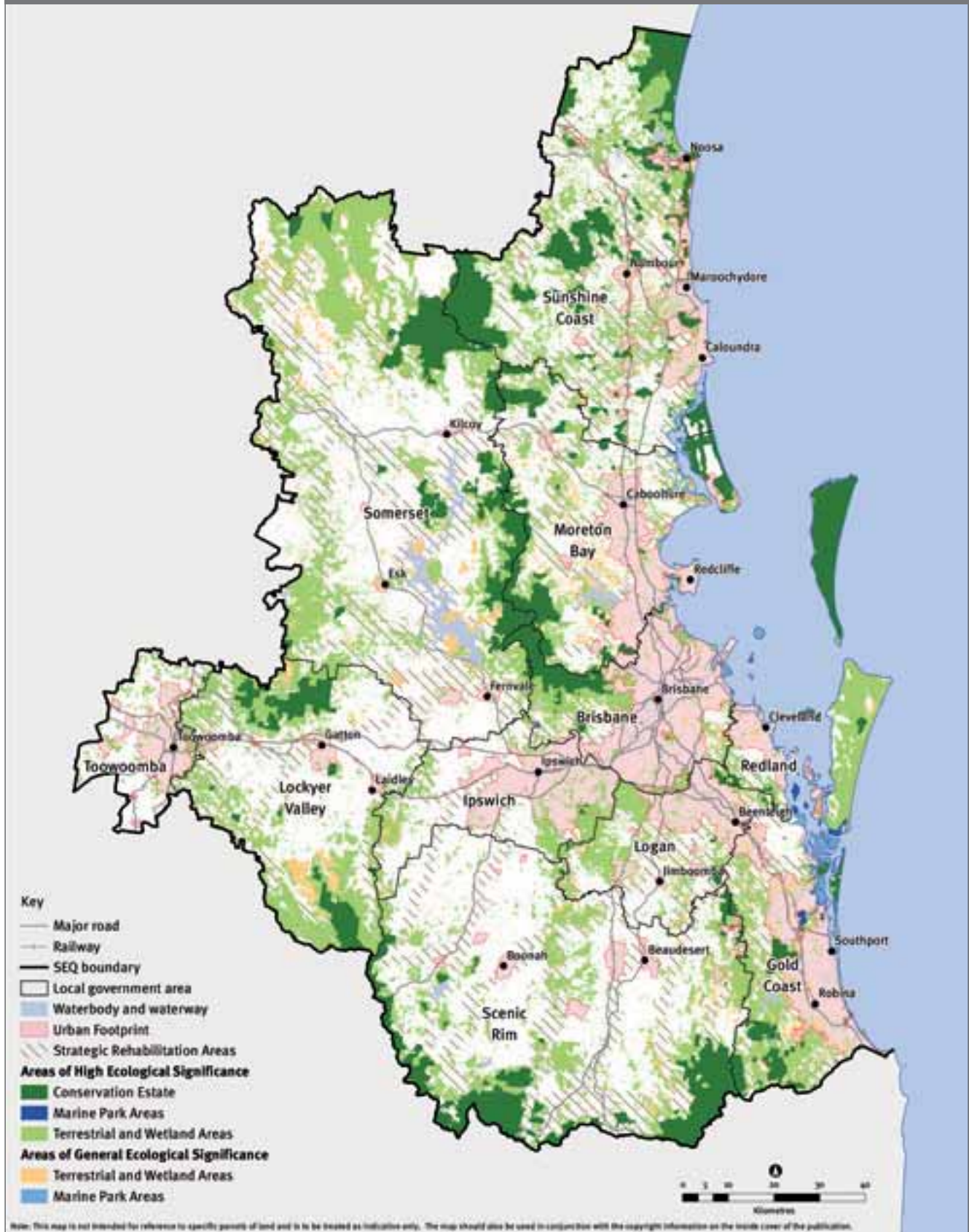
Map 1: South East Queensland



Map 2: South East Queensland regional land use categories



Map 3: Areas of ecological significance



Map 4: Major koala population and habitats

This map identifies the general location of current major koala populations in SEQ irrespective of their conservation status. The objectives of new regulatory and other measures to be developed by December 2009 will include seeking to maintain these populations at viable levels and protecting or reinvigorating the capacity for genetic exchange between them, with priority attention to be given to those populations in more urbanised settings (e.g. Pine Rivers and the Koala Coast) which are currently most at risk.

**Bushland habitat**

Predominantly wooded areas over 2 hectares in size where koalas either still persist or could technically (that is with no consideration of tenure or current or intended land use) be encouraged to use again through various measures such as increased connectivity with other habitat or measures to reduce impediments to safe koala movement.

**Urbanised areas of existing or possible value**

Built up areas containing a mosaic of trees, buildings, roads and small cleared areas where koalas either still persist or could technically be encouraged to use again through various measures including selective tree planting and measures to reduce impediments to safe koala movement. The feasibility of these areas making a contribution to supporting koala conservation in SEQ will vary depending on a range of factors not considered in this mapping such as cost and future land use intent. Nonetheless, some of these areas are expected to offer opportunities to protect and enhance at risk koala populations in the near term.

**Cleared areas of existing or possible value**

Cleared areas over 2 hectares where koalas either still persist or could technically be encouraged to use again through broadscale rehabilitation. The feasibility of these areas making a contribution to supporting koala conservation in SEQ will vary depending on a range of factors not considered in this mapping such as cost and current/future land use intent. Nonetheless, some of these areas are expected to offer opportunities to enhance and reconnect at risk koala populations in the longer term.

**Generally not suitable**

Areas generally not suitable for koalas due to vegetation type, intensive development and other reasons.

**Key**

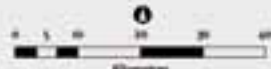
- Major road
- Railway
- SEQ boundary
- Local government area
- Waterbody and waterway

**Koala habitat**

- Bushland habitat
- Urbanised areas of existing or possible value
- Cleared areas of existing or possible value
- Generally not suitable
- Values unavailable

**Localities**

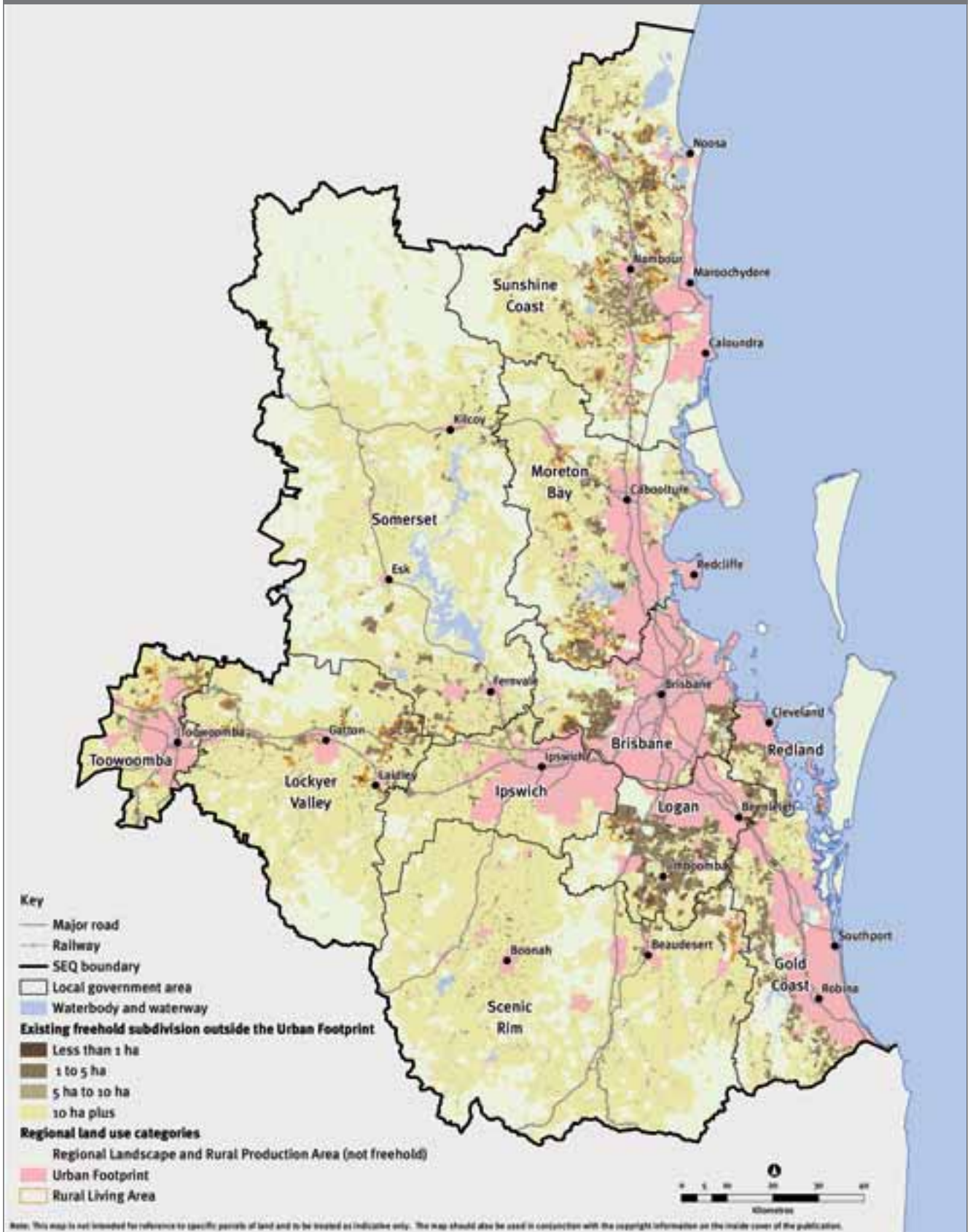
- |                  |                    |              |
|------------------|--------------------|--------------|
| 1 Noosa          | 6 North Stradbroke | 11 Jimboomba |
| 2 Sunshine Coast | 7 Esk              | 12 Coomera   |
| 3 Kilcoy         | 8 Koala Coast      | 13 Coombabah |
| 4 Caboolture     | 9 Rosewood         | 14 Numinbah  |
| 5 Pine Rivers    | 10 Purga           |              |



Note: This map is not intended for reference to specific parcels of land and is to be treated as indicative only. The map should also be used in conjunction with the copyright information on the inside cover of the publication.

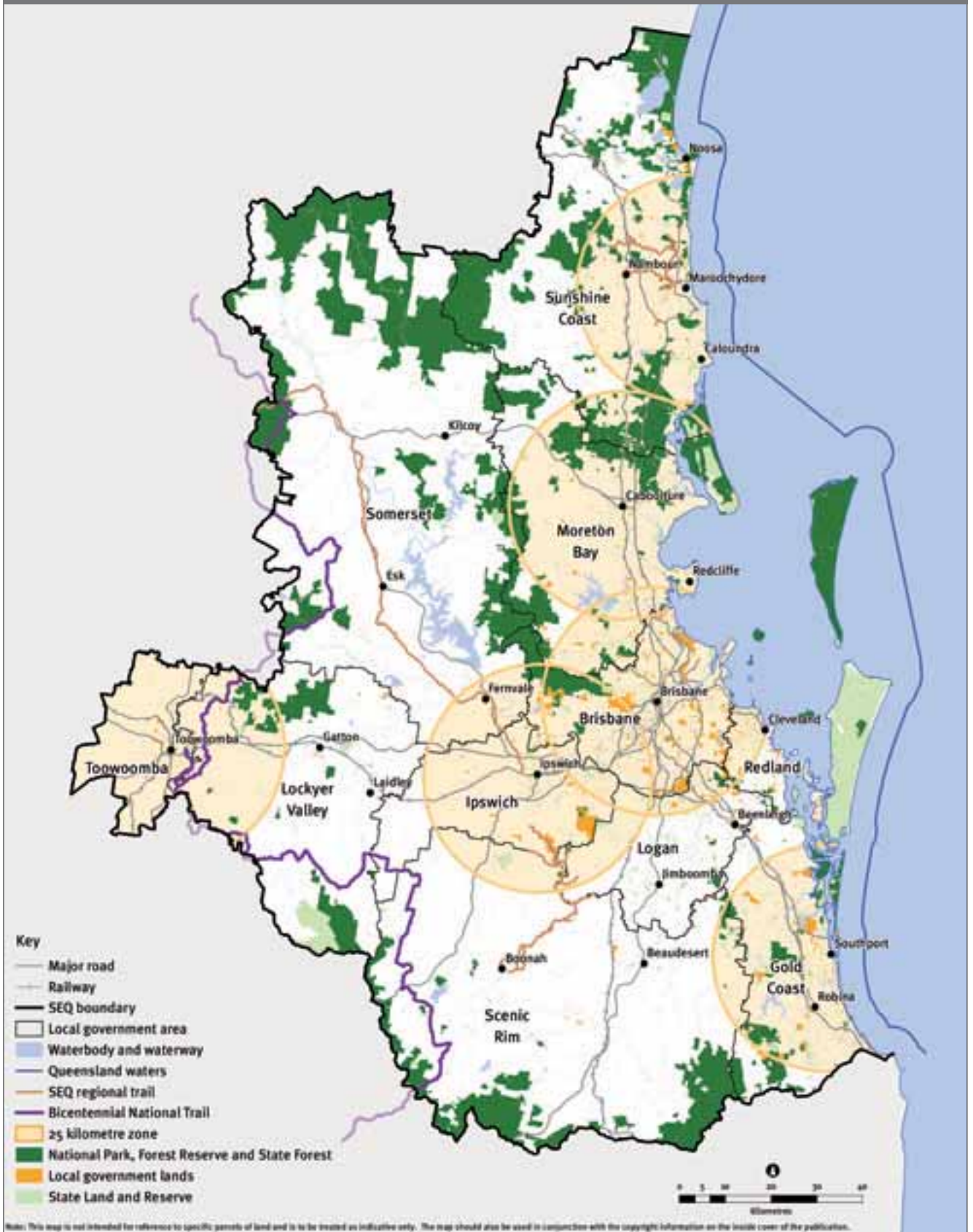


Map 5: Existing subdivision outside the Urban Footprint



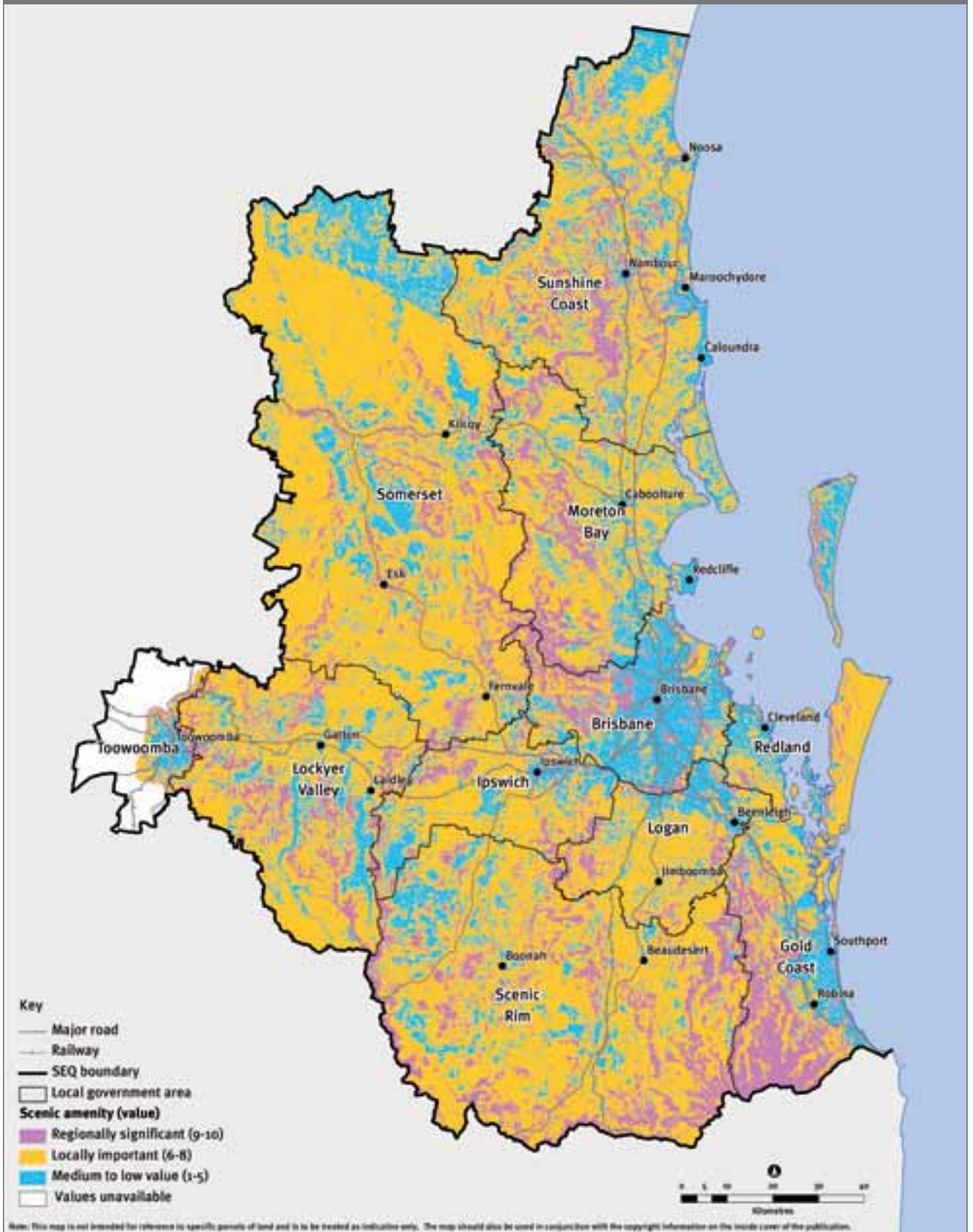


Map 6: Existing regional community greenspace network

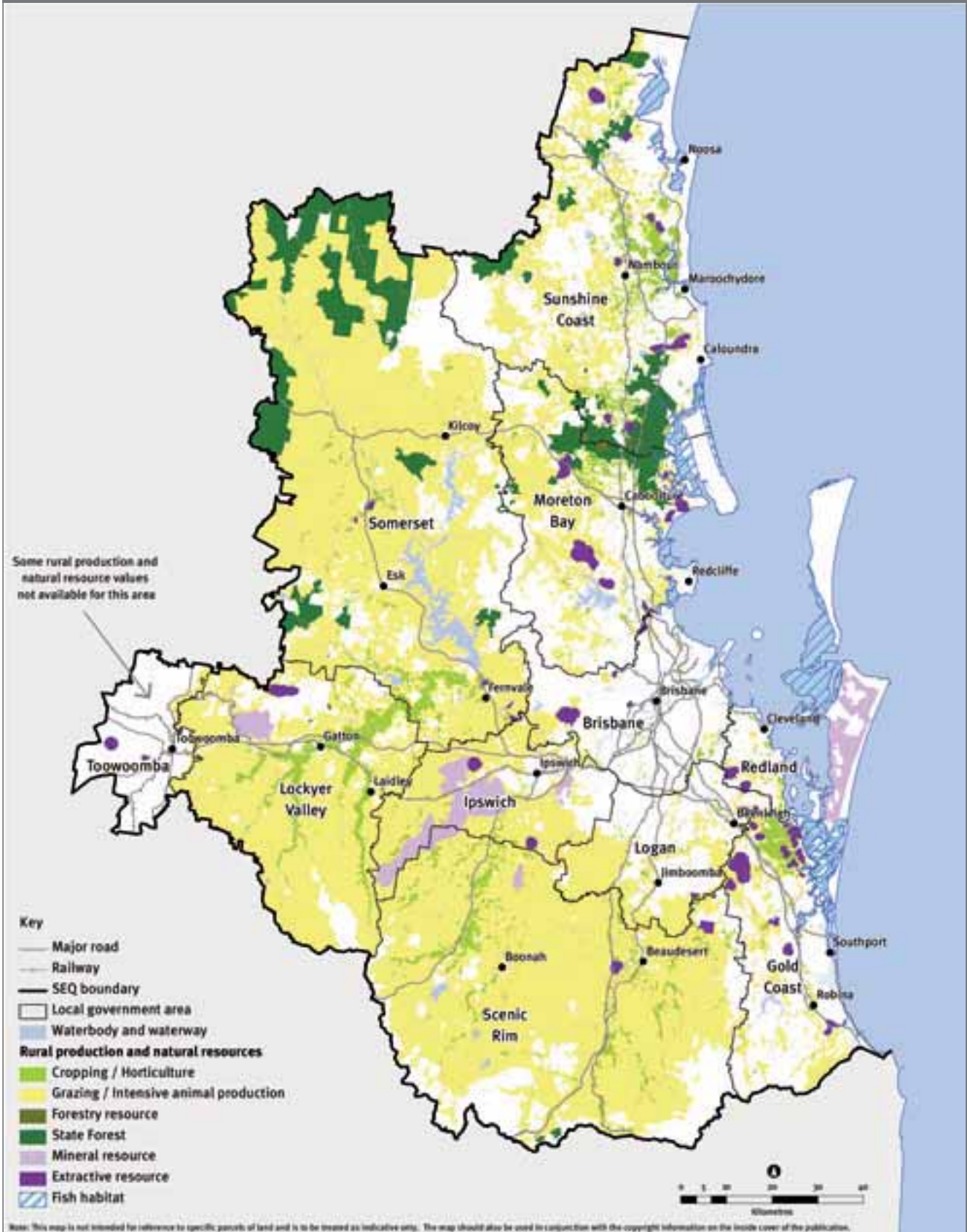




Map 7: Scenic amenity



Map 8: Rural production and natural resources





Map 9: South East Queensland Traditional Owner Alliance sub-regions and groups



Map 10: Activity centres network

