




SEQ Regional Plan 2009-2031
State Planning Regulatory Provisions

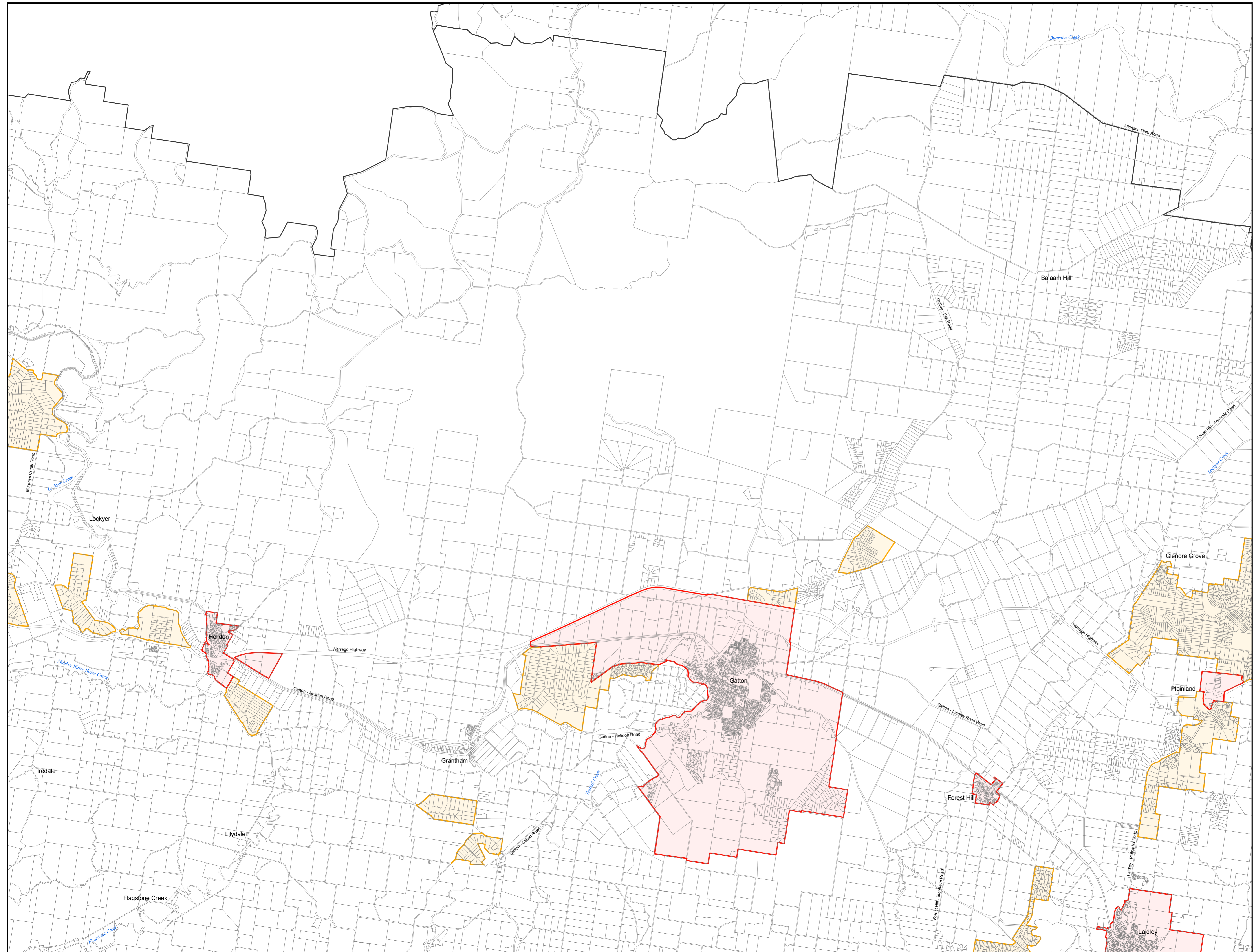
July 2009

Map SEQ RP 17

Map legend *

-  Regional Landscape and Rural Production Area
-  Urban Footprint
-  Rural Living Area

* For the planning intent of these areas refer to the SEQ Regional Plan 2009-2031



Map index

			1	
2	3	4		
5	6	7		
8	9	10	11	
12	13	14	15	
16	17	18	19	20
21	22	23	24	25
	26	27	28	29
		30	31	32

GDA94, MGA56

Scale 1 : 50,000 at A1



All the information contained within the mapping is derived from the Digital Cadastral Database (DCDB), March 2009, as supplied to the Department of Infrastructure and Planning by the Department of Environment and Resource Management.

While every care is taken to ensure the accuracy of this product the Department of Infrastructure and Planning and the Department of Environment and Resource Management make no representations or warranties about the accuracy, reliability, completeness or suitability for any particular purpose and disclaims all responsibility and all liability (including without limitation, liability in negligence) for all expenses, losses, damages (including indirect or consequential damage) and costs you may incur as a result of the product being inaccurate or incomplete in any way or for any reason. © The State of Queensland 2009.